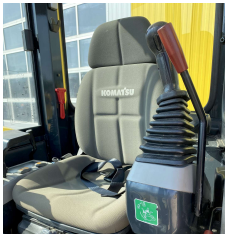




# MINI EXCAVATORS

## KOMATSU PC16R-3HS



### TECHNICAL DATA

Manufacturer:	<b>KOMATSU</b>
Model:	<b>PC16R-3HS</b>
Serial number:	<b>F76976</b>
Year of manufacture:	<b>2022</b>
Q-Standard:	<b>M2</b>
Operating hours:	<b>758</b>
Engine:	<b>3D67E</b>
HP:	<b>15 PS</b>
Tonnes:	<b>1.9 Tonnen</b>
Stock No.:	<b>168206</b>
Standort:	<b>Sarstedt, Deutschland</b>

### SPECIAL PRICE

**22.800,00 €**

plus VAT

**FINANZIERUNGSANGEBOT** Laufzeit bis zu 48 Monate  
mtl. Rate ab 490 Euro

### SCHLÜTER Q-STANDARD

- 1 Manufacturer's warranty remaining
- 2 **Workshop warranty by Schlüter**
- 3 Ready to work
- 4 Sold as seen and where standing
- 5 Part carrier

### ADDITIONAL INFORMATION

MINI EXCAVATOR KOMATSU PC 16 R-3 HS (EU-5), CAB + HEATING + 1 CONDUIT EPC, 2 SPEED LEVELS WITH AUTOMATIC CONTROL, ("AUTO-SHIFT-DOWN"), CLOSED-LOAD-SENSING-SYSTEM, TWO-WAY AUXILIARY HYDRAULICS TO BOOM, SWITCHABLE TO HAMMER MODE, DOZER BLADE, WORK LIGHTS ON BOOM, HYDRAULIC ADJUSTABLE UNDERCARRIAGE ("HS"), SLEWING BOOM, PROTECTIVE COVER FOR BOOM LIFT CYLINDER, AUDIBLE TRAVEL ALARM, CE CONFORMITY, 1.760 MM MONOBLOC BOOM+HYD.CIRCUIT, 1,215 MM DIPPER STICK +1.LEIT.EPC, STANDARD COUNTERWEIGHT, DELUXE OPERATOR'S SEAT 2 "FIXED SAFETY HARNESS, FUEL/LUBRICANTS STD, RUBBER TRACK (SHORT PITCH), FOOT PEDAL, 2 LATERAL MIRRORS, RADIO PREPARATION (WITHOUT RADIO), RADIO, XTRA TILT BVC-K 85, 180°, TILT 2x90°, QUICK TILT MS 01 WITH LASTHAKES

*Subject to changes, errors and prior sale. Offers are valid until revoked and are subject to the usual approval procedures.*

### CONTACT PERSON

#### Schlüter Baumaschinen GmbH

Herr Olaf Ehlerding  
Soester Straße 49-51  
59597 Erwitte  
Deutschland

#### Contact

Phone: +49 151 10848454  
Fax: +49 2943 987 611  
oehlerding@schlueter-baumaschinen.de